

C6 PLACENTA TREATMENT SYSTEMS FOR DIFFERENT LIFE-STYLES

I. BASIC CARE

Simple step with only cream for busy days

【STEP #1】

C6 CREAM



Surprising "Water release emulsion"

C6 Cream releases water solution on our skin to bring the activated protein inside the skin. This gives you a feeling of skin regeneration even with C6 Cream only.



II. NORMAL CARE

Easy 3 steps for a daily skin care

【STEP #1】

C6 WATER



【STEP #2】

C6 SERUM



【STEP #3】

C6 CREAM

III. RESCUE CARE

Cotton pack with C6 Water for an extra positive effect

【STEP #1】

C6 WATER
※ Cotton pack



【STEP #2】

C6 SERUM



【STEP #3】

C6 CREAM

IV. PERFECT CARE

An additional luxury step for the ultimate skin care

【STEP #1】

C6 WATER
※ Cotton pack



【STEP #2】

PLACENTAL
PLASMA



【STEP #2】

C6 SERUM



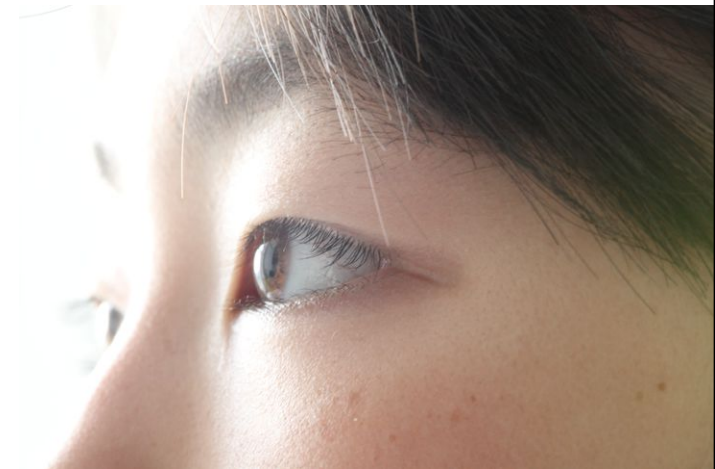
【STEP #3】

C6 CREAM

Premium natural skin
treatment system
from Japan.

Genuine and honest
scientific assistance
for your skin's eco-
system.

C6 by FILTOM.



EXP. **c6**

CARE BOOK

FILTOM INC.

C6 products - a genuine solution for healthy skin

unnecessary ingredients

too many chemicals and preservatives

misleading advertising

very little or no positive effect

Is your skin tired of conventional cosmetics?

skin repair

anti-aging

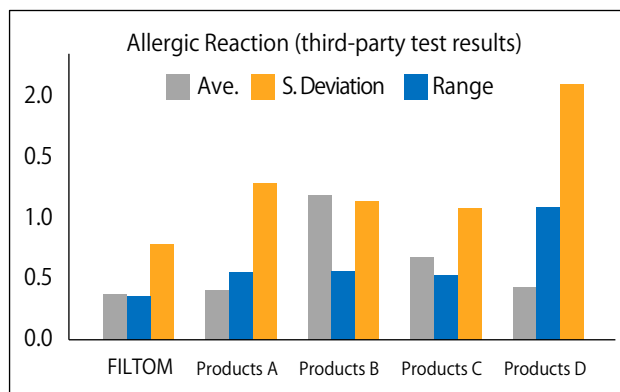
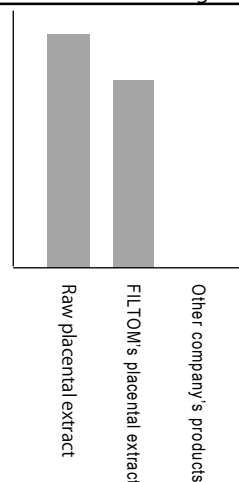
healthy skin

active ingredients

optimized ingredients

FILTOM's C6 products do it differently, due to the unique *PD Separation technology* behind them. Concentrated, pure active ingredients (incl. EGF - Epidermal Growth Factor) and all-natural components in C6 treatment system boost your skin's metabolism, repair it, supply with nutrients, provide anti-aging skin care. As we age, the natural regenerative ability of our skin declines, and C6 provides a genuine and effective solution to help regain your skin's health.

Amount of active ingredient



Comparative allergy testing

C6 products demonstrated the lowest allergy reaction in all three comparative test categories.

Optimized ingredients mean lower allergic reaction

Reasons for allergies are not the only preservatives and surfactants. Too many plant extracts and other components are the major causes. The less ingredients (of higher quality), the less the risk of allergic reactions.

<Number of ingredients>

Product A: 42, Product B: 40, Product C: 36
Product D: 59, **FILTOM C6 Serum: 12**

Skin repair effect of FILTOM C6 treatment



before

after

Any questions about Filtom's technologies and products? Please contact us and we'll be happy to provide any further details. We also work closely with universities and research institutions.

50% pure placental extract

19mL

C6 SERUM

INTENSIVE CARE



[Step 1] Put a small amount (1 push) on your finger pad, and gently apply onto your whole face.

[Step 2] Continue distributing C6 Serum with finger pads with a circular massaging motion.

20% pure placental extract

30mL

C6 CREAM

(UV / Moisturizer)

FULL-BODY CARE



[Step 1] Put a small amount (1-2 pushes) on your palm, and gently apply onto the target area with your finger pads.

[Step 2] Apply repeatedly to dry areas, such as those around eyes and lips.

※ UV and Moisturizer versions available

3% pure placental extract

50mL

C6 WATER

GENEROUS CARE



[Step 1] Fill your hand palm with C6 Water (10-12 pushes), and apply onto your whole face.

[Step 2] Pat lightly, and gently hold various areas of your face with your palms; for about 30 seconds in total.

99.8% pure placental extract

PLACENTAL PLASMA



[Step 1] Take one frozen capsule and warm it in your hand to unfreeze.

[Step 2] Fill your hand palm with all the capsule's liquid, apply on all target skin areas with finger pads.

[Step 3] Pat lightly, and gently hold various areas of your face with your palms; for about 30 seconds in total.

【CONTACT】

FILTOM Inc.

1-103 Hibikino-kita, Wakamatsu, Kitakyushu-shi, Fukuoka-ken, 808-0138 JAPAN

TEL: +81-93-616-7972

Email: info@filtom.com

www.filtom.com